

Customer (your company name):

Date:

Your name and surname:

Request delivery date for offer:

Your reference/Job No.:

## NUMBER OF LIFTS:

## STANDARDS

No CE Mark

EN81-20

EN81-70

## SPEED

1 m/s – 1.2 m/s with Varispeed technology

## CAPACITY / CAR DIMENSIONS

**450 kg / 6 persons**

950 x 1300 mm

1000 x 1200 mm

1000 x 1250 mm

1000 x 1300 mm

1050 x 1200 mm

**630 kg / 8 persons**

1050 x 1450 mm

1100 x 1400 mm

1150 x 1350 mm

## NUMBER OF STOPS:

**PIT** (mm):

**SHAFT DIMENSIONS** (if available)

**TRAVEL** (mm):

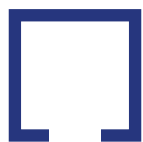
**HEADROOM** (mm):

Width (mm):

**FLOOR TO FLOOR DIMENSIONS** (mm):

Depth (mm):

## CAR ENTRANCES:



Single Entrance



Through Car

## CONTROL:

Down collective

Simplex

Triplex

Full collective

Duplex

Other

## POWER SUPPLY:

400 V

50 Hz

60 Hz

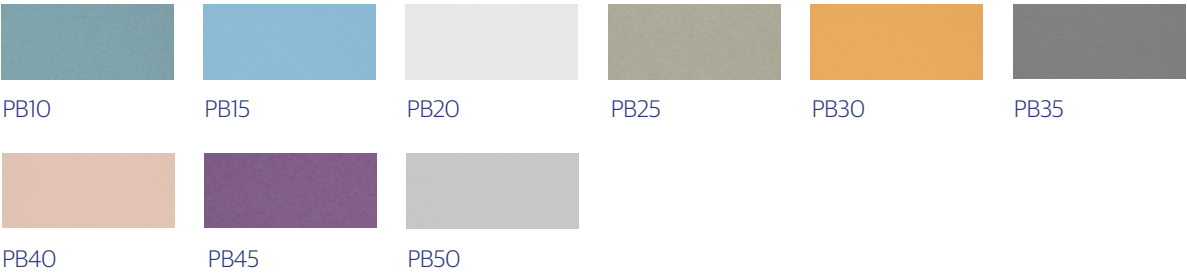
**DOORS:** WITTUR – AUGUSTA EVO – AUTOMATIC VVVF

Dimensions:	800 x 2000 mm	900 x 2000 mm
Type:	2-panel side opening	2-panel centre opening
Landing door finish:	Epoxy primed	SB stainless steel
Car door finish:	SB stainless steel	
Car door operator:	ECO	Landing door fire rating: E120 EN81-58

**CABIN FINISHES:**

**Layer Revolution® Series**

Skinplate



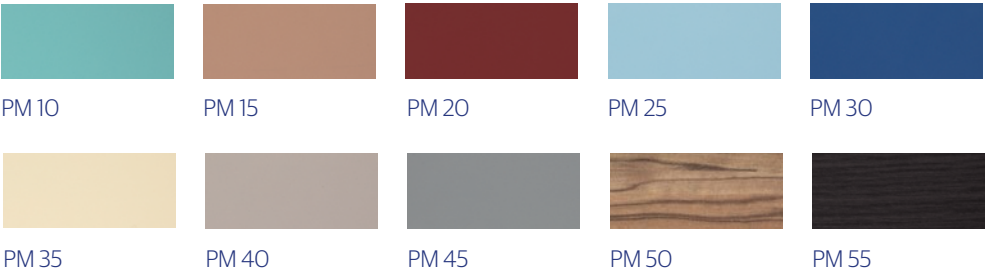
Stainless steel



Mirror: 1/2 mirror No mirror

**Mute Revolution® Series**

High-pressure laminates



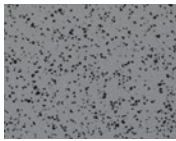
Mirror: 2/3 full height mirror No mirror

FLOORING

Rubber



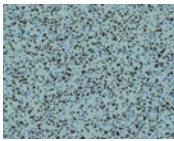
S45GN



S42GB



S101



S102

Handrails:

Black

Stainless Steel

Lighting:

Round LED spotlights

Square LED spotlights

LANDING PUSH STATIONS & INDICATORS

Landing Push Stations



BER1\*



BER2\*\*



BER3\*\*\*

\*Push buttons installed directly in the door frame.  
\*\* Flush mounted on door frame.  
\*\*\* Surface mounted on door frame.

Landing indicators



FERV



Smartech HR indicator.  
EN81-70 option: Includes for direction of travel arrow and gong.



HLER  
Car doorjamb  
(EN81-70)

CONTROL PANEL BOX FINISH

Epoxy

441 SB Brushed St. Steel

Patterned St. Steel

Other:

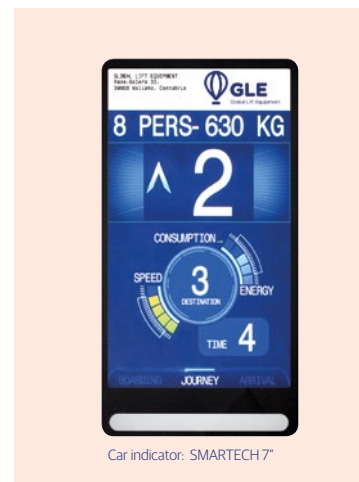
## EXTRAS:

Door close push button on COP  
Nudge  
Homing mode  
EN81-73 Fire control  
Car fan  
Independent service key switch  
Departure gong  
Voice synthesizer  
Installation kits – Plumbs line fixings and guides starting base  
Installation kits – Machine lifting tool  
Installation kits – Lifting and maintenance beam

## STANDARD FEATURES:

The **Enviro Revolution** comes with the following standard features:

- Direct Approach
- 2D WECC safety edge
- Standby mode
- Overload function
- Emergency rescue
- Emergency light on car ceiling
- Autodialler: AVIRE MK-742 emergency phone
- Car indicator: SMARTECH 7"
- Push buttons: DMG MACRO  
(stainless steel with tactile legend and Braille, EN1-70 compliant)



The **Enviro Revolution** also has the following advantages:

- Quick spin machine encoder set at the factory
- Distance between floors preset at the factory
- Average lead time of 4 weeks
- Installation time of less than 100 hours (calculated for a 630kg, 6-stop lift)

## Observations: