



# GLE.Diana.Kea 500

## Product characteristics

Traction Ratio:

**1:1 2:1**

Rated capacity:

**800, 1000, 1350, 1600, 2000 kg.**

Rated elevator speed:

**1, 1.6, 1.75, 2.0, 2.5 m/s**

Brake Voltage:

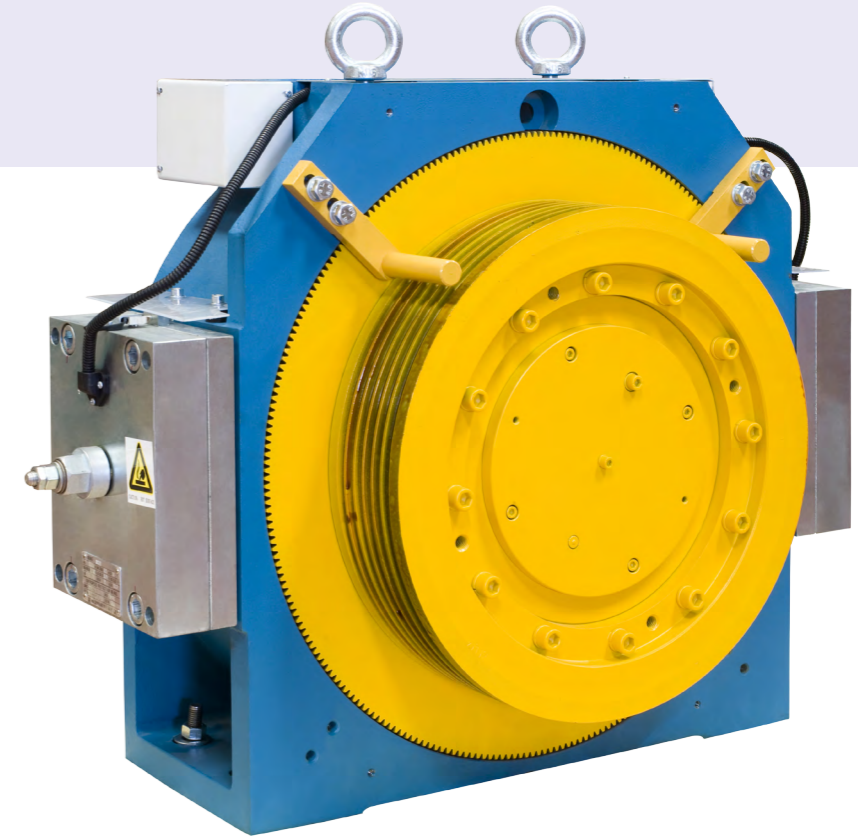
**DC 200V opening and DC100V for holding**

Max. Static Load:

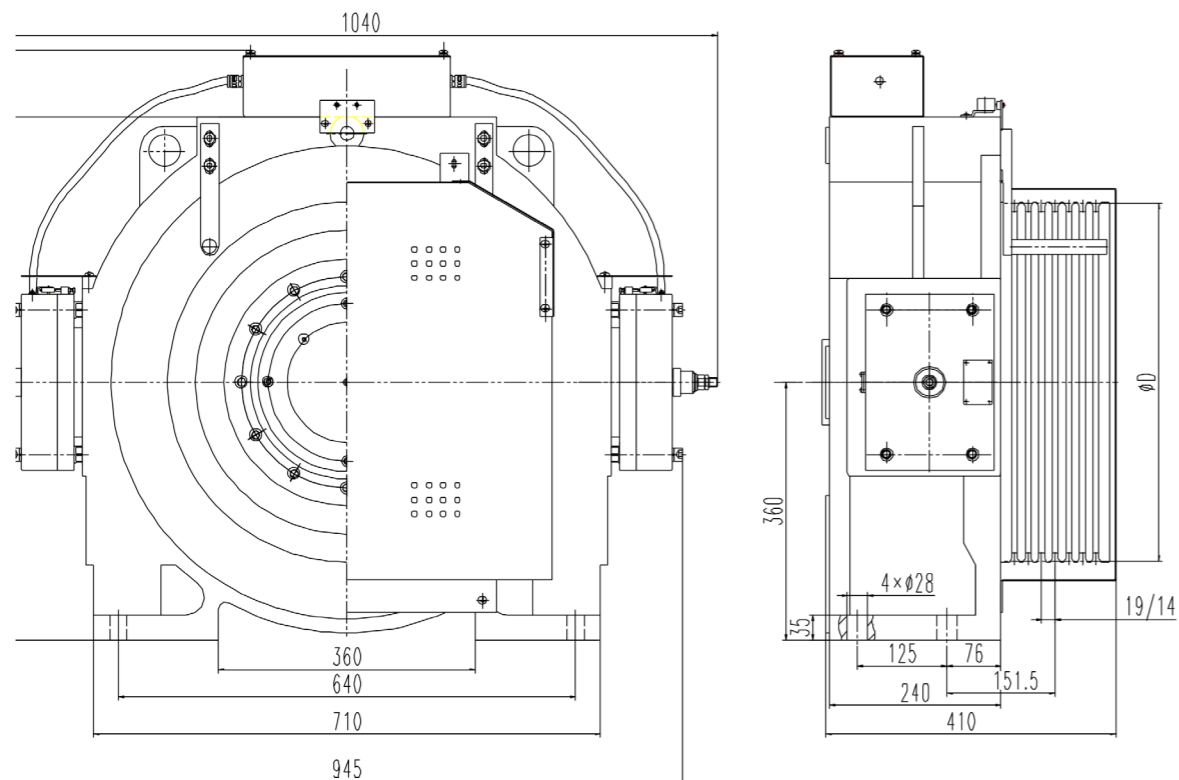
**3.000 Kg.**

## Product description

GLE Diana Kea500 is a medium and high speed traction machine with large capacity. It operates in single warp form, and is applicable to the installation of high-rise of elevators with machine room, and has passed CSA certification.



## Overall and installation dimensions





## Main features

Type	Speed m/s	Load (kg)	Frequency (Hz)	Rev (r/min)	Power (kW)	Current (A)	Ropes	Suspension	Torque (N·m)	Weight (kg)	(m)
Mini.2-10-800-1	1	800	9.6	38.4	5.5	14	7 x Ø 12 x 19	1 Ø 1	1360	765	45
Mini.2-16-800-1	1.6		15.3	61.2	8.7	20					70
Mini.2-17.5-800-1	1.75		16.7	66.8	9.5	22					80
Mini.2-20-800-1	2		19.1	76.4	10.9	25					90
Mini.2-25-800-1	2.5		23.9	95.6	13.6	30					120
Mini.2-10-1000-1	1	1000	9.6	38.4	6.8	17	10 x Ø 10 x 14	2 : 1	1700	780	45
Mini.2-16-1000-1	1.6		15.3	61.2	10.9	25					70
Mini.2-17.5-1000-1	1.75		16.7	66.8	11.9	27					80
Mini.2-20-1000-1	2		19.1	76.4	13.6	30					90
Mini.2-25-1000-1	2.5		23.9	95.6	17	37					120
Mini.2-10-1250-1	1	1250	11.6	46.4	8.5	20.6	10 x Ø 10 x 14	2 : 1	1740	780	45
Mini.2-16-1250-1	1.6		18.6	74.4	13.6	32.8					70
Mini.2-17.5-1250-1	1.75		20.4	81.6	14.9	35.5					80
Mini.2-20-1250-1	2		23.3	93.2	17	41.5					80
Mini.2-10-1350-2	1	1350	19.2	76.8	9.2	23	7 x Ø 12 x 19	1 Ø 1	1148	750	45
Mini.2-16-1350-2	1.6		30.6	122.4	14.7	33.8					70
Mini.2-17.5-1350-2	1.75		33.4	133.6	16	36.5					80
Mini.2-20-1350-2	2		38.2	152.8	18.4	40.5					90
Mini.2-25-1350-2	2.5		47.8	191	23	50.6					120
Mini.2-10-1600-2	1	1600	19.1	76.4	10.9	25	7 x Ø 12 x 19	1 Ø 1	1360	765	45
Mini.2-16-1600-2	1.6		30.6	122.4	17.3	40					70
Mini.2-17.5-1600-2	1.75		33.4	133.6	19	43.2					80
Mini.2-20-1600-2	2		38.2	152.8	21.8	48					90
Mini.2-25-1600-2	2.5		47.8	191	27.2	60					120
Mini.2-10-2000-2	1	2000	19.1	76.4	13.6	30	10 x Ø 10 x 14	2 : 1	1700	780	45
Mini.2-16-2000-2	1.6		30.6	122.4	21.8	50					70
Mini.2-17.5-2000-2	1.75		33.4	133.6	23.8	54					80
Mini.2-20-2000-2	2		38.2	152.8	27.2	60					90
Mini.2-25-2000-2	2.5		47.8	191	34	75					120
Mini.2-10-1600-2	1	1600	23.3	93.2	10.9	25	7 x Ø 12 x 19	1 Ø 1	1120	750	45
Mini.2-16-1600-2	1.6		37.3	149.2	17.3	40					70
Mini.2-17.5-1600-2	1.75		40.8	163.2	19	43.2					80
Mini.2-20-1600-2	2		46.6	186.4	21.8	48					90
Mini.2-10-2000-2	1		2000	23.3	93.2	13.6					30
Mini.2-16-2000-2	1.6	37.3		149.2	21.8	50	70				
Mini.2-17.5-2000-2	1.75	40.8		163.2	23.8	54	80				
Mini.2-20-2000-2	2	46.6		186.4	27.2	60	90				
Mini.2-10-2500-2	1	2500		23.3	93.2	17	39.5	10 x Ø 10 x 14	2 : 1	1740	780
Mini.2-16-2500-2	1.6		37.3	149.2	27.2	60	70				
Mini.2-17.5-2500-2	1.75		40.8	163.2	29.8	66.7	80				
Mini.2-20-2500-2	2		46.6	186.4	34	76.2	80				

